



Roomba®

Vacuuming Robot


800 Series

Regular Robot Care

Recommended Robot Care

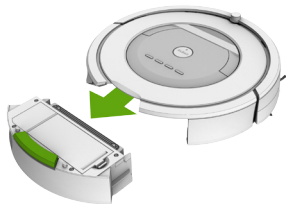
To keep Roomba running at peak performance, perform the following care procedures. If you notice Roomba picking up less debris from your floor, empty the bin, clean the filter, and clean the extractors.

Robot Part	Care Frequency	Replacement Frequency
Bin	After each use	-
Filter	Once per week (twice per week in homes with pets)	Every 2 months
Full Bin Sensors Front Castor Wheel	Once every 2 weeks	Every 12 months
Side Brush Cliff Sensors Charging Contacts	Once per month	-
Extractors	Once every 4 months (once every 3 months in homes with pets)	Every 6-12 months

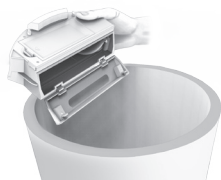
 **Note:** iRobot manufactures various replacement parts and assemblies. You may purchase replacement parts by visiting www.irobot.com/Roomba800. If you have questions regarding replacement parts, please contact iRobot Customer Care for more information.

Emptying the bin

- 1 Press bin release button to remove bin.

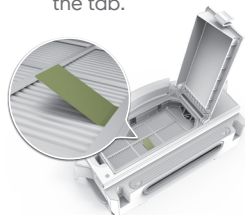


- 2 Open bin door to empty bin.



Cleaning the Filter

- 1 Open the filter door and remove filter by grasping the tab.



- 2 Shake off debris by tapping the filter against the side of your household waste bin.



- 3 Reinsert filter with the tab facing up.



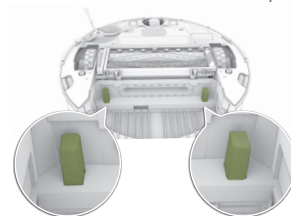
Important: The filter door won't close unless a filter is reinserted correctly. Replace the filter every two months.

Cleaning the Full Bin Sensors

- 1 Remove and empty the bin.



- 2 Wipe the sensors with a clean, dry cloth.

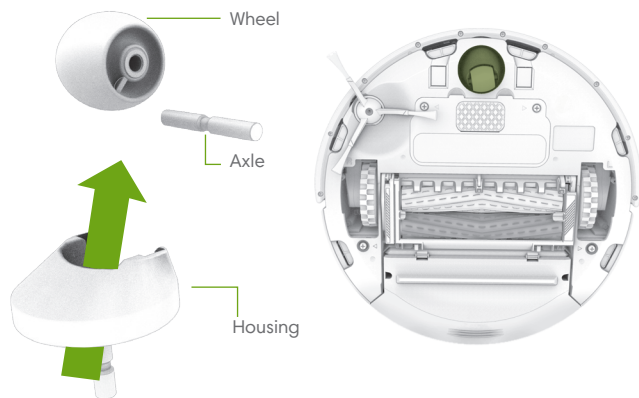


- 3 Wipe the inner and outer sensor ports on the bin with a clean, dry cloth.



Cleaning the Front Castor Wheel

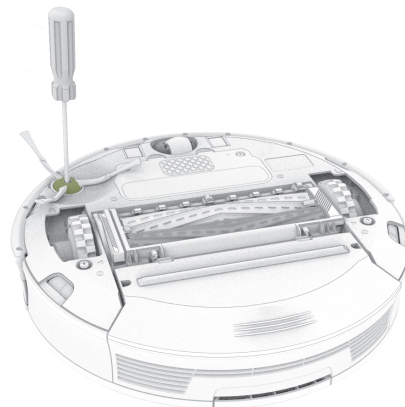
- 1 Pull firmly on the front wheel to remove it.
- 2 Remove any debris from inside the wheel cavity.
- 3 Spin the wheel by hand. If the rotation is restricted, remove the wheel from its housing and push firmly to remove the axle and clear any debris or hair wrapped around it.
- 4 Reinstall all parts when finished. Make sure the wheel clicks back into place.



 **Important:** A front wheel clogged with hair and debris could result in floor damage.

Cleaning the Side Brush

- 1 Use a coin or small screwdriver to remove the screw.
- 2 Remove the brush, clean the brush and the brush post, and then reinstall the brush.



Cleaning the Sensors and Charging Contacts

- 1 Wipe the sensors with a clean, dry cloth. Do not spray cleaning solution directly onto the sensors or sensor openings. Wipe the charging contacts on Roomba and the Home Base with a clean, dry cloth.



Cleaning the Extractors

- 1 Pinch the extractor frame release tabs, lift up the extractor frame and remove any obstructions.
- 2 Remove the extractors and then the extractor caps. Remove any hair or debris that has collected underneath the caps and around the metal axles. Reinstall the extractor caps.
- 3 Remove hair and debris from the square and hexagonal plastic pegs on the other side of the extractors.
- 4 Clear the vacuum path.
- 5 Reinstall the extractors. Match the colour and shape of the extractor pegs with the colour and shape of the extractor icons on the cleaning head module.

